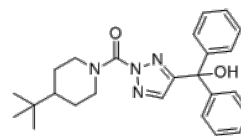


Product Name : ML211
Cat. No. : PC-38505
CAS No. : 2205032-89-7
Molecular Formula : C₂₅H₃₀N₄O₂
Molecular Weight : 418.541
Target : Phospholipase
Solubility : 10 mM in DMSO



Biological Activity

ML211 is a potent, selective, dual **LYPLA1/LYPLA2** inhibitor with IC₅₀ of 17/31 nM, respectively, displays no activity against ABHD11 and other 20 serine hydrolases.

References

Hsu KL, et al. Bethesda (MD): National Center for Biotechnology Information (US); 2010–.

Caution: Product has not been fully validated for medical applications. Lab Use Only!

E-mail: tech@probechem.com